

There are many
**providers of
dental implants.**



Headquarter

Thommen Medical AG
Neckarsulmstrasse 28
2540 Grenchen | Switzerland
Tel. +41 61 965 90 20
Fax +41 61 965 90 21
info@thommenmedical.com

But only one
like Thommen
Medical.



Your contact
**We look forward to
talking to you!**

Outstanding dedication, quality and partnership with you.

If you try to do too many things at the same time, you will never pay enough attention to the most important priority. That is why our approach has been clear and our 30-year heritage differentiates us from others – we are the dedicated, dental implant experts.

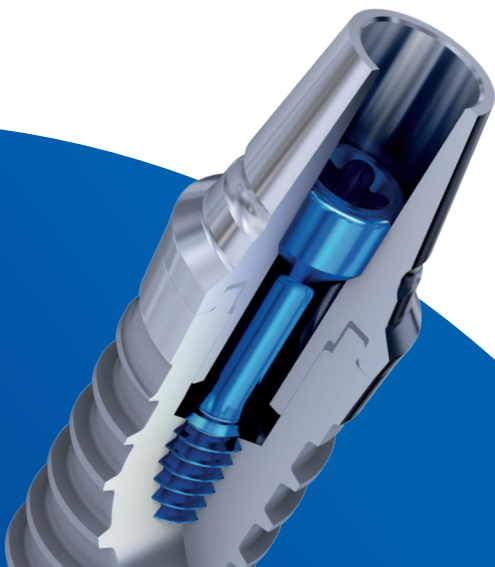
The development of the Thommen Medical Dental Implant System began for us by listening to dental professionals' clinical needs and validating the solutions through science to provide proven patient outcomes. We continue to work closely with clinical and scientific experts to make sure the system benefits from technological and clinical advancements while not reacting to temporary marketing trends.

With Thommen Medical you have an implant expert which is a leader in research, innovation

and manufacturing technology. We focus on a proven and guaranteed portfolio, are motivated by science and provide a boutique, personal experience.

Thommen Medical is an independent, family owned business and not contracted to the lowest bidder.

Because we know: The satisfaction of your patient has the highest priority for you – and for us.





Safety for you:
We are the implant experts.

We focus on a proven and guaranteed portfolio, ensuring safety for your practice-quality and your patients.

We are passionate and have the best trained employees. We are a different kind of company and do not follow marketing trends, but we are motivated by science, that's why customer proximity is important to us.

As customer you will feel this positive spirit in our products and in your cooperation with Thommen Medical.

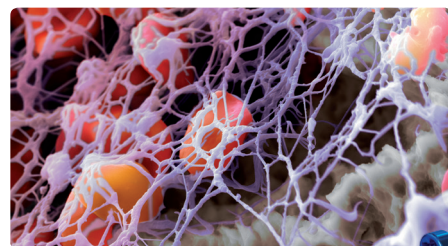


Reliability:
For every problem, the right solution.

We solve the problems of the clinician. Our focus is on your needs, not on ours. Our credo is: no compromise in quality – innovation and creativity are our sources of success. Only the best long-term results are acceptable.

Everything we do is backed by science. This is why our superhydrophilic implant surface INICELL shows an improved performance in the early healing phase (Calvo, 2010), which gives you security from the start (le Gac, Grunder 2015; Hicklin SP, Buser D 2015). This is also why our proven implant connection has exceptional properties and allows wonderful aesthetic results since more than 30 years.

Our goal is to continuously improve the quality of life of your patients in a functional and aesthetic way.





Supported by
the best clinicians:
**Strong partnership with
leading experts.**

Every patient should have access to the best implants. That's why we want the best dentists and dental technicians to use our implants with conviction. We are always at your side with Service & Support to make your life easier.

To be close to the leading experts and pulse of time, we work closely with an advisory board of renowned dental clinicians from around the world such as **Ueli Grunder, Markus Hürzeler, Otto Zuhr, Kony Meyenberg, David Nisand, Mauro Merli** and many others. Our products are tailored to their treatment concepts, because we strive for perfection and we also like our quality in all areas to be monitored from the outside.



Dr. U. Grunder



Prof. Dr. M. Hürzeler



Precision:
**Perfection at everything
we do.**

Whatever we do, perfection is our guiding principle.

At Thommen Medical, we develop, produce and market our products in our own facility in Switzerland – from concept to final production.

Because if we keep all production including 100% quality inspection in our own hands, we keep quality close to our heart.

With the simple result: Pure Swiss craftsmanship and quality.





Video portrait
**Get a picture
of us – take a look
behind the
scenes:**



Easily scan this code
with your smartphone and
experience Thommen
Medical „live“.

Pre-clinical

Calvo-Guirado JL, Ortiz-Ruiz AJ, Negri B, López-Marí L, Rodríguez-Barba C, Schlottig F Clinical Oral Implants Research 21, no. 3 (210): 308-15.

Clinical

Le Gac O, Grunder U. Dentistry Journal, no 3 (2015): 15-23.

Hicklin SP, Schneebeil E, Chappuis Vivianne, Janner SF, Buser D, Brägger U Clinical Oral Implants Research, 0/2015 / 1-9.